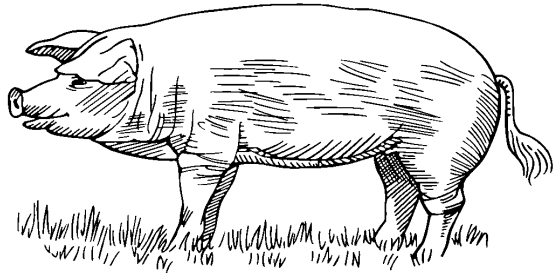


# Ifidimua

## Wanyama wanaofugwa *Domestic Animals*

TSH 300/=

Kivwanji  
Kiswahili  
Kiingereza  
Tuhamini lugha zetu





# Ifidimua

## Wanyama wanaofugwa

### *Domestic Animals*

Huduma ya Kutafsiri Biblia na  
Kuendeleza Lugha za Asili, Mbeya  
S.L.P. 6359, Mbeya, Tanzania  
Pamoja na  
SIL International



**Lola:** Ipicha sa fidimua m̄ kitabu iki nasivonesia unukome unvuo.  
**Tazama:** Picha za wanyama katika kitabu hiki hazionyeshi saizi ya kweli.  
**NB:** *The pictures of the animals in this book do not show the real size.*

**Utangulizi:** Huduma ya Kutafsiri Biblia na Kuendeleza Lugha za Asili, Mbeya (SIL International) ilianza tarehe 23 Julai 2003. Ilianza kwa ushirikiano kati ya viongozi wa makanisa na mashirika mbalimbali na SIL International.

Kusudi letu ni kuwahudumia watu wa makabila yafuatayo: Wabena, Wabungu, Wakinga, Wakisi, Wamalila, Wamanda, Wandali, Wanyakyusa, Wanyiha, Wapangwa, Wasafwa, Wasangu na Wavwanji.

**Lengo letu la kwanza** ni kuyafikia makabila hayo kwa Neno la Mungu (Biblia) katika lugha zao kwa sababu tunaamini MUNGU ANAONGEA LUGHA ZOTE!

**Lengo letu la pili** ni kuwaheshimu watu wa makabila haya kwa njia ya kuwafundisha kusoma na kuandika lugha zao (Idara ya Kusoma na Kuandika Kilugha).

Sera ya Utamaduni ya Tanzania inasema hivi:

*3.2. Lugha za Jamii*

*Lugha za jamii ni hazina kuu ya historia, mila, desturi, teknolojia na utamaduni wetu kwa jumla. Aidha, lugha hizi ni msingi wa lugha yetu ya taifa, yaani Kiswahili...*

**Kichwa:** Ifidimua / Wanyama wanaofugwa / *Domestic Animals*

**Lugha:** Kivwanji / Kiswahili / Kiingereza

**Kimeandaliwa na:** Nancy Loveland, Brigitte Niederseer, Liz Wisbey

**Mtafsiri:** Juhudi Konga

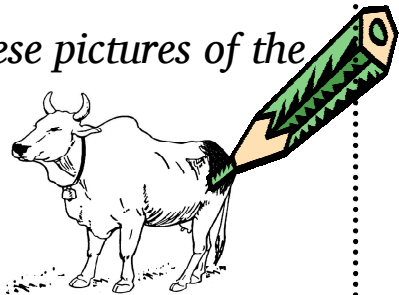
**Michoro:** © 2001 International Illustrations, the Art of Reading 2.0

Toleo la kwanza © 2016 SIL International

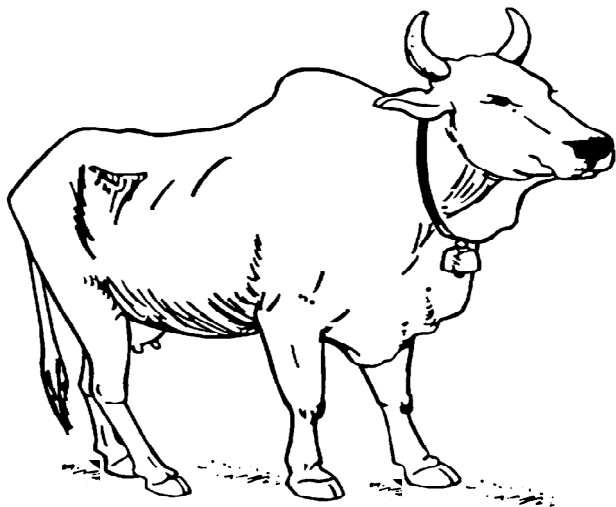
Nave ghukeela, unoghiile pipaka ilangi  
ipicha isi isa fikanu.

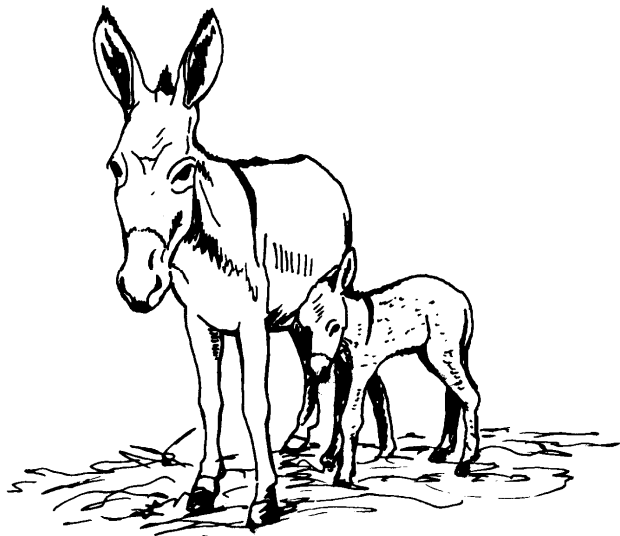
Ukitaka unaweza kupaka rangi picha hizi za  
wanyama.

*If you want you can colour these pictures of the  
animals.*



ng'ombe  
ng'ombe  
COW



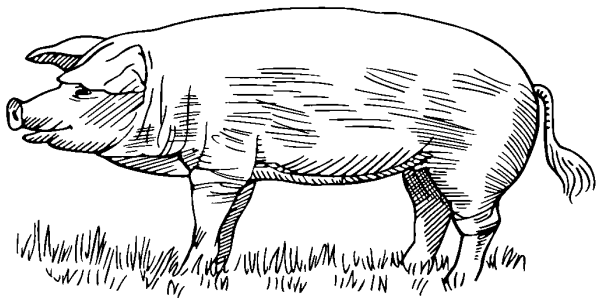


dogovi  
punda  
*donkey*

mhene  
mbuzi  
*goat*



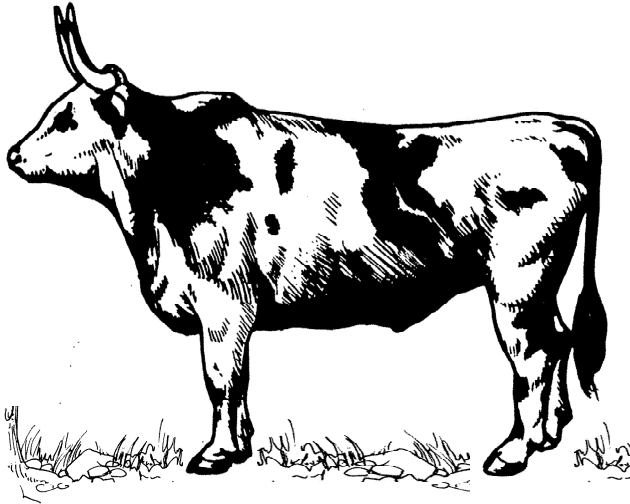




ngɤbe  
nguruwe  
*pig*

ng'holo  
kondoo  
*sheep*





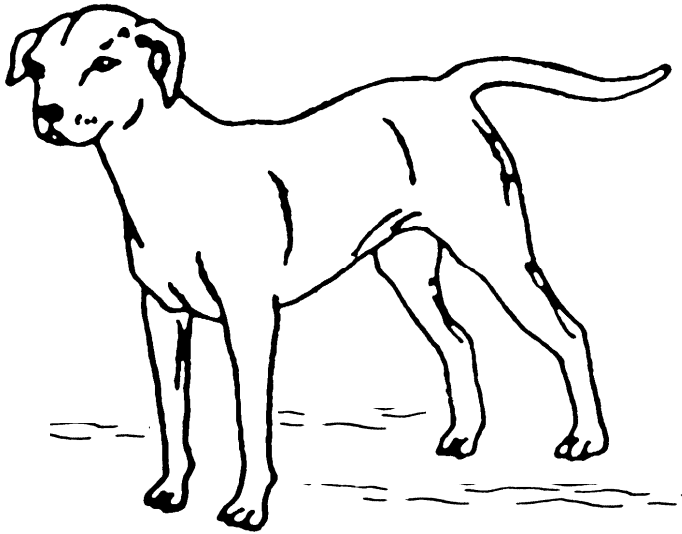
ng'hambako  
fahali  
*bull*

nyaavu

paka

*cat*



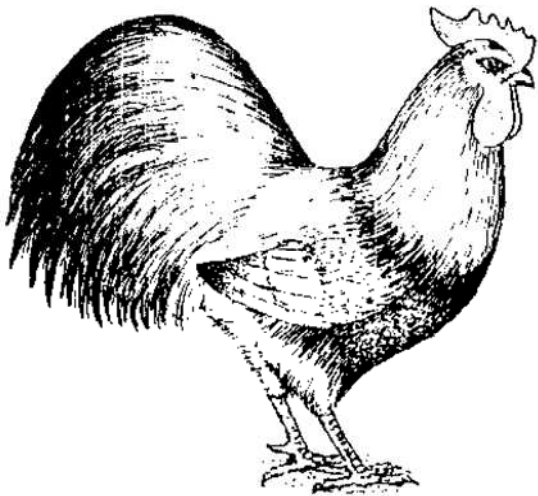


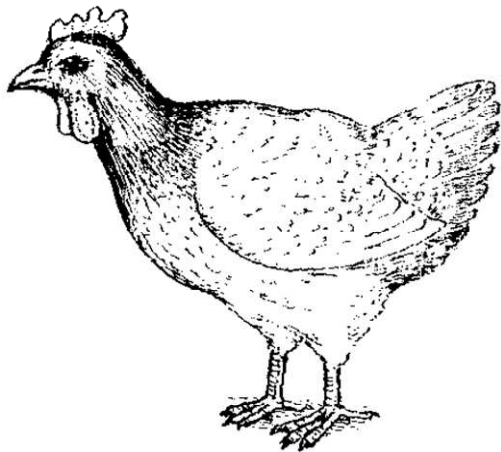
mbua  
mbwa  
*dog*

ng'hongove

jogoo

*rooster*





swigha

tetea

*hen*

Vuli, ndepoonu ghulemba amatavua agha fidimua ifi ma njovele ja Kivwanji, tja Kiswahili ni Kingleesa?

Je, unaweza kuandika majina ya wanyama hawa kwa Kivwanji, Kiswahili na Kiingereza?

*Now can you write the names of these animals in Vwanji, Swahili and English?*

---

---

---







---

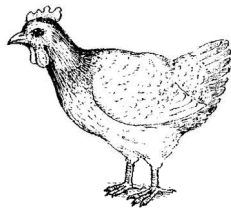
---

---

---

---

---





---

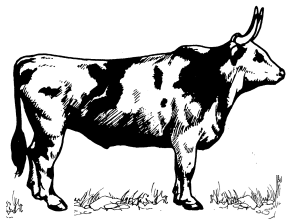
---

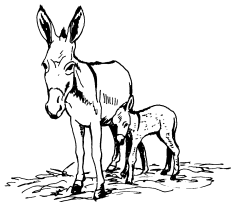
---

---

---

---





---

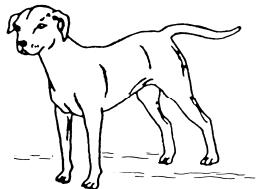
---

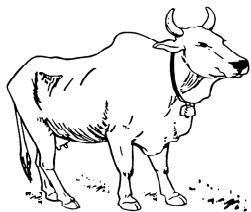
---

---

---

---





---

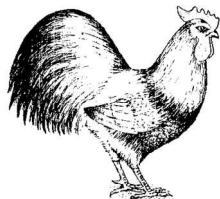
---

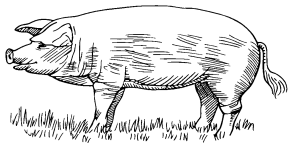
---

---

---

---





---

---

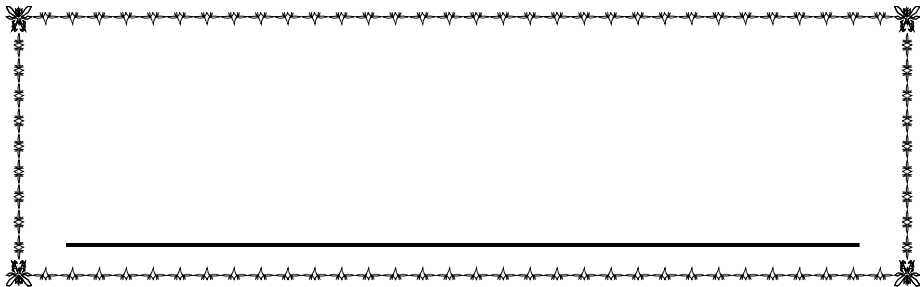
---

Hongela umalile umanyilo!  
Hongera kwa kumaliza mazoezi!  
*Congratulations on finishing the exercises!*

Īkitabu ĩki kya:

Kijitabu hiki ni mali ya:

*This booklet belongs to:*





Kama una maswali yeyote, au unataka kununua vitabu, au  
kuhudhuria darasa la kusoma, wasiliana na:

Namba za simu 0767 933 808 au 0755 047 333